

CHEMICALS: PRONTO use at 1:4

EQUIPMENT:

Personal Protective Equipment (goggles, gloves)
Tape
Wet Floor Signs
Dust Mop
Putty Knife or Edging Tool
2 Mop Buckets with Wringers

Cotton Mop to apply stripper
Clean cotton mop for rinse
Autoscrubber
Stripping Pads or Stripping Brushes
Broom & Dust Pan
Wiping Cloths

PROCEDURES:

STEPS

KEY POINTS

1. Assemble equipment
2. Remove any free-standing objects from the floor. Vacuum or clean the walk-off mats and set aside.



3. Remove gum and other material with putty knife. Tape edge if this area meets another tile or carpet area.
4. Dust mop entire floor and remove all dry soil.



5. Wearing appropriate safety equipment according to product label directions.

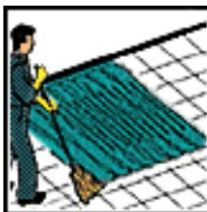


6. Mix stripper per label dilution. **Note:** Add chemical to water and never leave chemicals unattended.



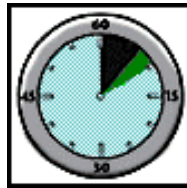
7. Ensure adequate ventilation is present.

8. Using mop and bucket apply stripper liberally to the floor.



1. See above.
2. Place "Caution-Wet Floor" signs at the end of each area. Place walk-off mat at exit area.
3. Deposit in waste receptacle.
4. Work toward ends of aisles, pick up with dust pan and broom.
5. Local site OH&S requirements may require specific chemical handling.
6. Use warm to hot water to soften old polish build-up unless label instructions require cold.
7. Open windows or mechanically ventilate area.
8. Areas may require Taping to prevent stripper migration

9. Allow stripper to stay on floor for 5-10 minutes.
10. Use edging tool to strip close to baseboards and in corners.



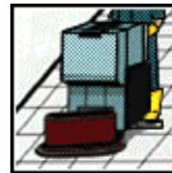
9. Keep floor wet, apply more stripper solution if required.
10. Attention is required in any areas inaccessible to machine.

11. Scub floor with autoscrubber machine fitted with black strip pad. Make first pass with pads down and vaccum off. Second pass with pads down and vaccum on.



11. Make slow overlapping passes with machine. Work from areas already stripped to minimise slipping on floor. Change pads and rinse as they become full for reuse.

12. Note steps 8-11 may need to be repeated for heavy build up.



12. Areas that are not completely stripped will be still slippery.

13. Use a hand held floor squeegee to pull solution away from inaccessible areas to machine.



13. Pay particular attention to areas where stripper solution may run.

14. Apply clean rinse water from the tank with pads down and vacuum on.

14. Hot water will speed dry time.

15. Trail mop autoscrubber with rinse water to remove any areas missed by squeegee.

15. Make sure to mop over areas that are streaked from autoscrubber.

16. Allow floor to dry to touch.

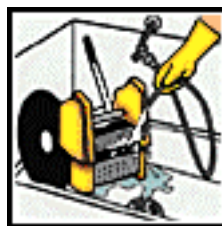
17. Check for stripper residue on the floor with palm of hand.



16. Check for dark or shiny spots of old finish. Repeat steps 8 – 15 on any spots not completely stripped.

17. White powder on palm indicates insufficient rinsing. Repeat steps 14 - 17 again.

18. Clean all equipment and return to its appropriate area. Remove wet floor signs.



18. Equipment in good clean working order improves the quality of the result.